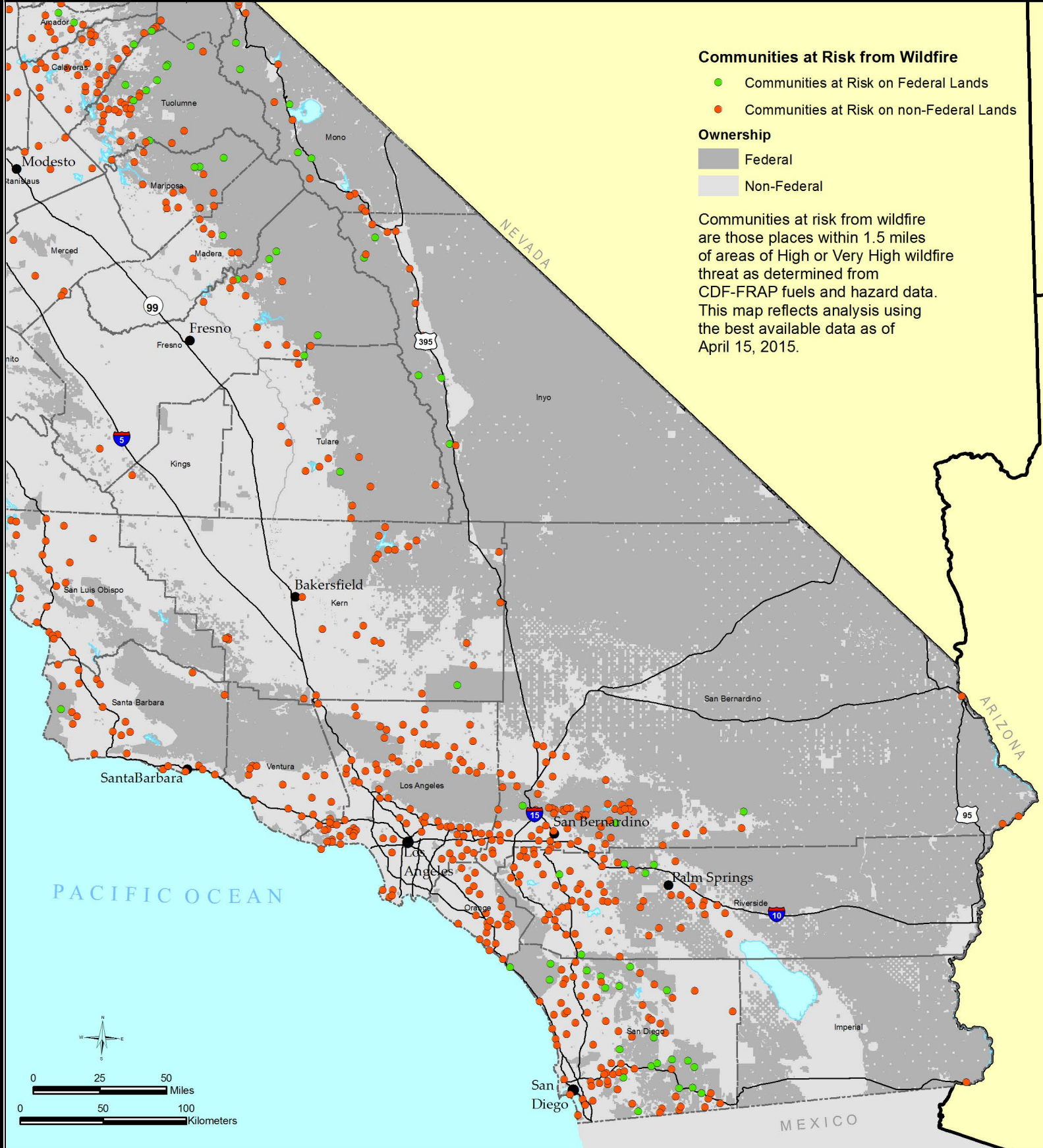




# SOUTHERN CALIFORNIA COMMUNITIES AT RISK FROM WILDFIRE



### Communities at Risk from Wildfire

- Communities at Risk on Federal Lands
- Communities at Risk on non-Federal Lands

### Ownership

- Federal
- Non-Federal

Communities at risk from wildfire are those places within 1.5 miles of areas of High or Very High wildfire threat as determined from CDF-FRAP fuels and hazard data. This map reflects analysis using the best available data as of April 15, 2015.

The State of California and the Department of Forestry and Fire Protection make no representations or warranties regarding the accuracy of data or maps. Neither the State nor the Department shall be liable under any circumstances for any direct, special, incidental, or consequential damages with respect to any claim by any user or third party on account of, or arising from, the use of data or maps.

Obtain FRAP maps, data, metadata and publications on the Internet at <http://frap.cdf.ca.gov>. For more information, contact CAL FIRE-FRAP, PO Box 944246, Sacramento, CA 94244-2460, (916) 327-3939.

DATA SOURCES  
comatrisk v15\_1  
ownership13\_2

Jerry Brown, Governor, State of California  
John Laird, Secretary for Resources, The Natural Resources Agency  
Ken Pimlott, Director, Department of Forestry and Fire Protection