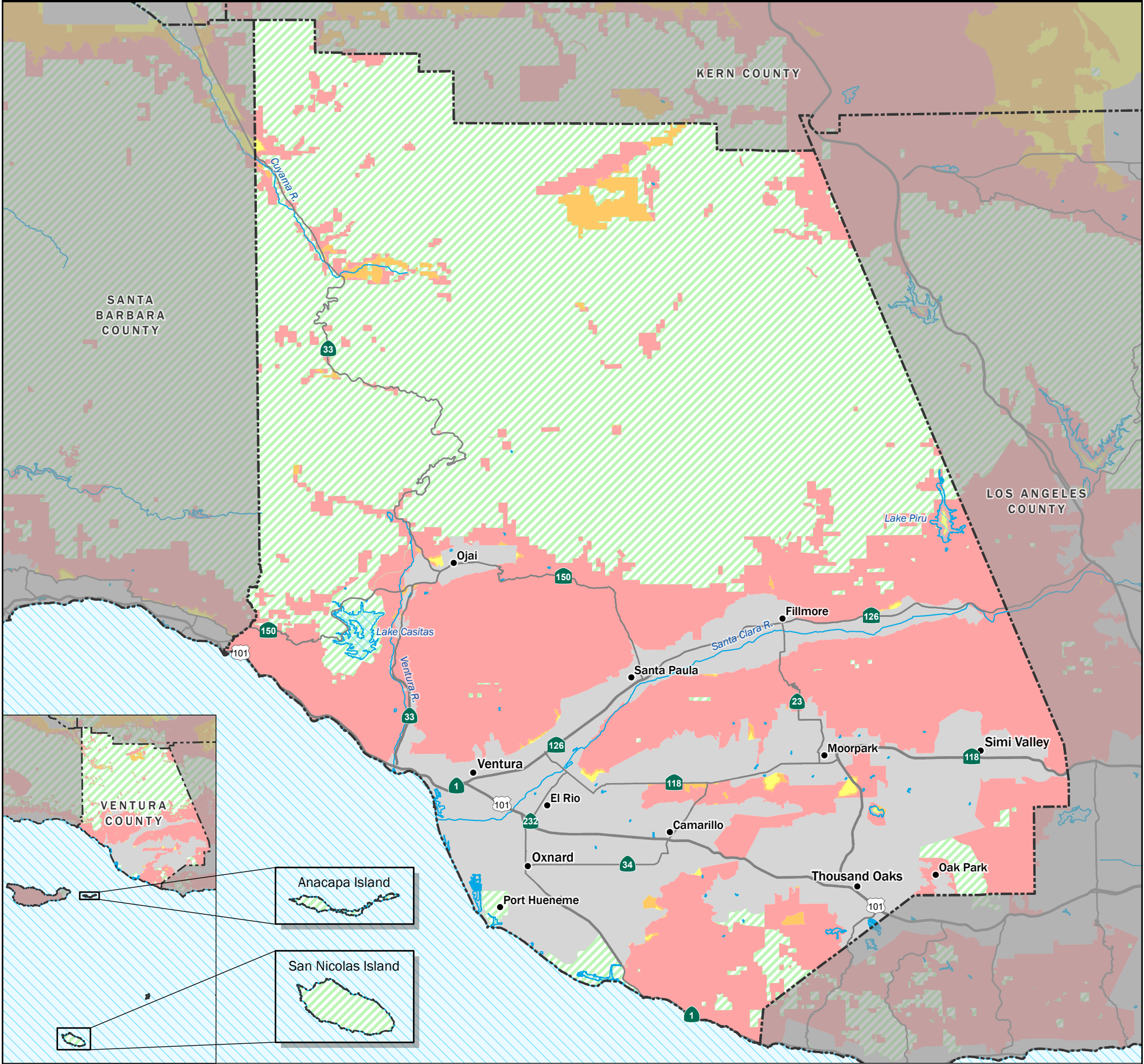


State Responsibility Area Fire Hazard Severity Zones

November 21, 2022



Fire Hazard Severity Zones in State Responsibility Area (SRA)

Very High	340,936 Acres
High	12,493 Acres
Moderate	1,908 Acres

Fire Protection Responsibility Areas (non-SRA)

Federal Responsibility Area (FRA)
Local Responsibility Area (LRA)

0 5 10
Miles

0 5 10 15 20
Kilometers

Projection: NAD 83 California Teale Albers
Scale: 1:400,000 at 11" x 17"

Public Resources Code 4201-4204 directs the California Department of Forestry and Fire Protection (CAL FIRE) to map fire hazard within State Responsibility Areas (SRA) based on fuel loading, slope, fire weather, and other relevant factors present, including areas where winds have been identified by the department as a major cause of wildfire spread. These zones, referred to as Fire Hazard Severity Zones (FHSZ), classify a wildland zone as Moderate, High, or Very High fire hazard based on the average hazard across the area included in the zone.

Access PDF versions of the maps at <https://osfm.fire.ca.gov/fhsz-maps>. For more information, please visit the Frequently Asked Questions document for the 2023 Fire Hazard Severity Zones at <https://osfm.fire.ca.gov/fhsz> or scan the QR code at right. If you have further questions, please call 916-633-7655 or email FHSZcomments@fire.ca.gov.



Scan or click the
QR code for more
information and to
visit the interactive
FHSZ viewer.

The State of California and the Department of Forestry and Fire Protection make no representations or warranties regarding the accuracy of data or maps. Neither the State nor the Department shall be liable under any circumstances for any direct, special, incidental, or consequential damages with respect to any claim by any user or third party on account of, or arising from, the use of data or maps. Obtain FRAP maps, data, metadata, and publications at <https://frap.fire.ca.gov>. For more information, please call 916-633-7655 or email FHSZcomments@fire.ca.gov.

Gavin Newsom, Governor, State of California
Wade Crowfoot, Secretary for Natural Resources,
California Natural Resources Agency
Mike Richwine, State Fire Marshal,
California Department of Forestry and Fire Protection

Data Sources:
CAL FIRE Fire Hazard Severity Zones
(FHSZSRA_DRAFT_23_1)
CAL FIRE State Responsibility Areas (SRA22_2)